

Career Exploration & Career Development Experience Pilot

Community of Practice

December 9th, 2021



Education Systems Center

NORTHERN ILLINOIS UNIVERSITY



Who's here today?

**Please write your
name, title, and
organization
in the chat**

- Please mute computers and/or phones when not sharing with the group
- Unmute yourself or use the chat to provide any comments or questions throughout today's discussion



Small Breakout Rooms

What are you looking forward to over the winter break?



Plan for Today

- Overview of Resources & Announcements
- Community Presentations
 - Elmwood Park Community Unit School District 401
 - Lake County Tech Campus
- Breakout Room Discussions by Pilot Focus Area



Overview of Resources & Announcements



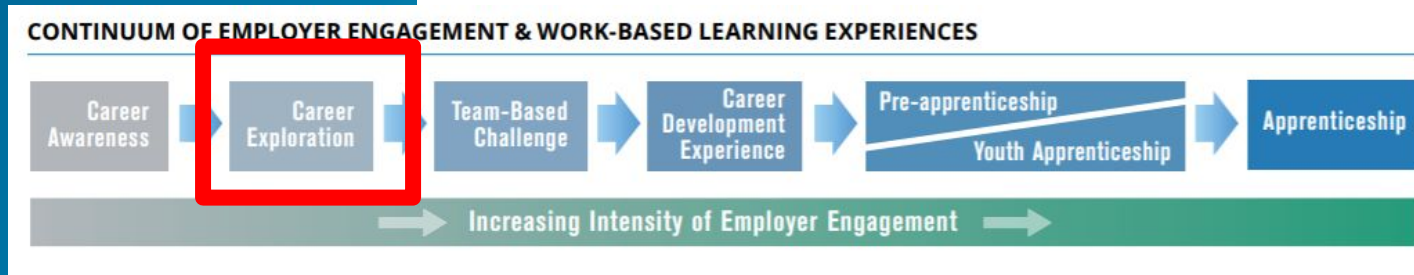
Work-Based Learning Continuum



Career Exploration

From [Illinois Career Pathways Dictionary](#):

An activity such as a job shadow, attendance at a career exposition, or employer site visit providing an individual with the ability to **engage directly with employers**, for the purpose of **gaining knowledge of one or more industry sectors or occupations**



Career Development Experience (CDE)

A supervised work experience relating to an individual's career area of interest that:

- 1) Occurs in a workplace or under other authentic working conditions;
- 2) Is co-developed by an education provider and at least one employer in the relevant field;
- 3) Provides compensation or educational credit to the participant;
- 4) Reinforces foundational professional skills including, at a minimum, those outlined in the Essential Employability Skills framework;
- 5) Includes a Professional Skills Assessment that assesses skill development and is utilized as a participant feedback tool; and
- 6) Takes place for a minimum of 60 total hours.



ISBE Pilot Resource Hub

Includes:

- Meeting Recordings and Presentations
- Statewide Frameworks
- Career Exploration Resources
- Career Development Experience Resources
- Additional Resources through I-WIN
- Pilot Listserv Sign-ups

Link: [Career Exploration and Career Development Experience Resource Hub](#)



Outreach to Build Resource Bank

EdSystems has welcomed our high school intern this month - Eni!

They may be reaching out to you in the next few months to gather information and materials to include on the ISBE Pilot Resource Hub

If you are interested in contributing to the resource hub and getting connected with Eni, please email me directly (hpenczak@niu.edu)

Career Exploration Template

OVERVIEW

Title of Event	Click or tap here to enter text.	
Type of Activity <i>(Job shadow, guest speaker, career fair, site visit, etc.)</i>	Click or tap here to enter text.	
Model for Delivery <i>(virtual, hybrid, in-person)</i>	Click or tap here to enter text.	
Industry Partner(s)	Click or tap here to enter text.	
Endorsement Area(s)	Click or tap here to enter text.	
Occupations Represented	Click or tap here to enter text.	
Brief Event Description <i>(Include any links to resources and materials as you are able)</i>	Click or tap here to enter text.	
Preparation Activities before the Event <i>(Include any links to resources and materials as you are able)</i>	For Participants	For Partners
	Click or tap here to enter text.	Click or tap here to enter text.
Reflection/Follow-up Activities after the Event <i>(Include any links to resources and materials as you are able)</i>	Click or tap here to enter text.	Click or tap here to enter text.

Pilot Listservs and Community Conversations

Pilot Listservs

At the bottom of the [ISBE Pilot Resource Hub](#) you can join one or both listservs with fellow ISBE pilot contacts, to share resources and best practices via email beyond our Communities of Practice

This is an additional subscription to support cross-community collaboration; you do not need to subscribe to these to receive general communication and invites related to the ISBE pilot

Community Conversations

Upcoming additional opportunities to connect with communities (there are no presentations at these but rather a time to connect and share thinking/questions among pilot schools)

Registration Links:

- [Career Exploration](#)
 - Tuesday, Jan. 18th @ 10:00a
- [Career Development Experience](#)
 - Wednesday, Jan. 19th @ 3:30p



ISBE Announcements

Karen Lockhart

klockhar@isbe.net



Community Presentations





6th-8th Grade



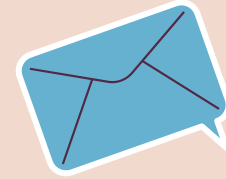
ELM MIDDLE SCHOOL

College & Career Pathways



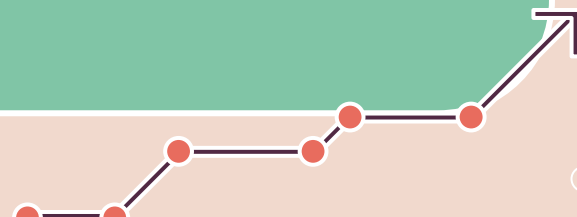
Dr. Leah Gauthier
Dr. Kimberly Ontiveros
Mrs. Ashley Groeneveld

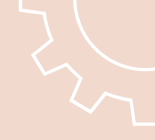





EPCUSD 401 College & Career Pathway Initiative

Through pathway exploration, aligned programs of study and experience-based learning opportunities, students will graduate with well-developed post-secondary plans and a diverse set of skills suited for academic and career success.



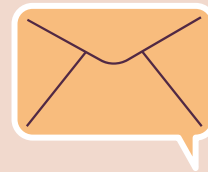


College & Career Pathways in EPSCUD 401: What is it?




Elm Middle School

Starting at Elm Middle School, students explore a variety of interests aligned to future careers.



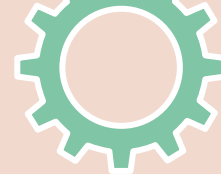
Elmwood Park High School

As students enter EPHS, they continue with coursework opportunities that focus in greater depth on college and career pathways of interest to them. [EPHS Pathways](#)





District 401's Program



Student interest surveys delivered to gather interest for programming

Step 1

All students take part in the course selection process.

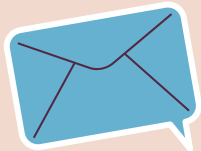
Step 3

Step 2

Career Study courses are created based on survey information relating to the 16 career clusters

Step 4

The middle school currently offers 7 electives correlating to the 16 career clusters and will be adding 2 more in the 2022-2023 school year.



Sixteen Career Clusters

Agriculture, Food, & Natural Resources	Education & Training	Hospitality & Tourism	Manufacturing
Architecture & Construction	Finance	Human Services	Marketing, Sales & Service
Arts, A/V Technology & Communications	Government & Public Administration	Information Technology	Science, Technology, Engineering & Mathematics
Business Management & Administration	Health Science	Law, Public Safety, Corrections & Security	Transportation, Distribution & Logistics



CSI Offerings

Psychology

Entrepreneurship

Game Design

**Hospitality &
Tourism**

Sociology

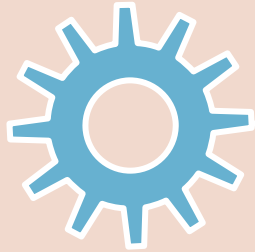
Creative Writing

Business

****Health Science &
Sports Medicine**

****Architecture &
Engineering**

Career Electives



Exposure

Each course is 1 trimester long



Low Stakes

Courses are pass/fail which allows students a low-risk opportunity to explore new areas of interest



Variety

Students have the opportunity to take 9 different courses throughout their time at EMS



Long Term Benefit

Students benefit from this exploration because it provides an opportunity to explore different pathways before making a post-secondary commitment

Transitioning to High School

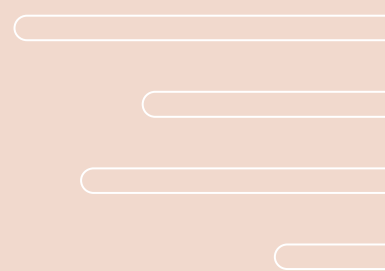
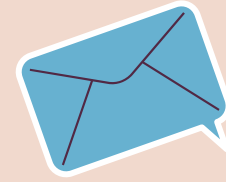
01

Once at high school, students will be able to explore individual pathways based on their interests.

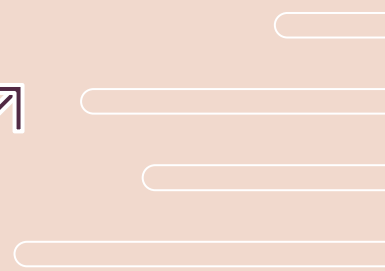
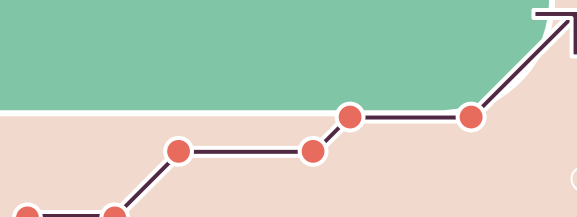
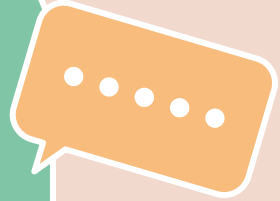
02

Students are exposed to both college preparatory courses and vocational training opportunities based on their interests as they move through high school.





College & Career Pathway Video





THANKS!

Do you have any questions?
gauthierl@epcusd401.org
ontiveroski@epcusd401.org
groenevelda@epcusd401.org

Danielle Friedlieb, M.ED, ED.S

Associate Principal, EFE 080

Lake County Tech Campus



Breakout Room Discussions

Wows & Wonders

- What insights did you get today?
- What questions did today bring up for you?
- In what ways could you incorporate what was shared today?

Share Pilot Plans

Discuss your Career Exploration and/or Career Development Experience plan for the school year → provide insights and ask probing questions as others share



Breakout Rooms

Room 1: Career Exploration for grades K-8

Room 2: Career Exploration for grades 9-12

Room 3: Career Development Experiences (Health Sciences & IT)

Room 4: Career Development Experiences (Business & Manufacturing)

Room 5: Career Development Experiences in all other industry areas



Closing & Next Steps



Feedback on Today & Future Sessions

Please complete the feedback [google form](#) to let us know:

- Insights, questions from today
- Requests for future sessions
- Current status and next steps for your pilot plan
- Anyone else who should be added to these invites and related communication



Next Steps

- Submit the [google form](#) to provide feedback on today and input for future convenings
- Next Community of Practice will be in February
- What questions do you have?

Contact Information:

Karen Lockhart

Principal Consultant

Illinois State Board of Education

klockhar@isbe.net

Heather Penczak

Policy & Program Manager

Education Systems Center - NIU

hpenczak@niu.edu



Thank you!

