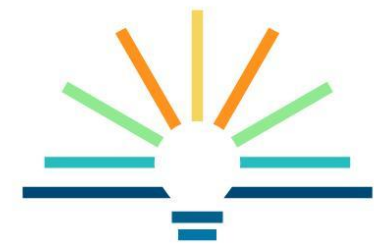


Illinois Career Pathways Dictionary Relaunch

October 3, 2023



EdSystems

EDUCATION SYSTEMS CENTER *at*
NORTHERN ILLINOIS UNIVERSITY



Today's Objectives

- Highlight the Career Pathways Dictionary and how it can be used by policymakers and practitioners.
- Explore the new website.
- Provide background information about how the Dictionary was developed and updated



Highlighting State Agency Partners

Marci Johnson, ISBE

Whitney Thompson, ICCB

Shannon Hampton, DCEO

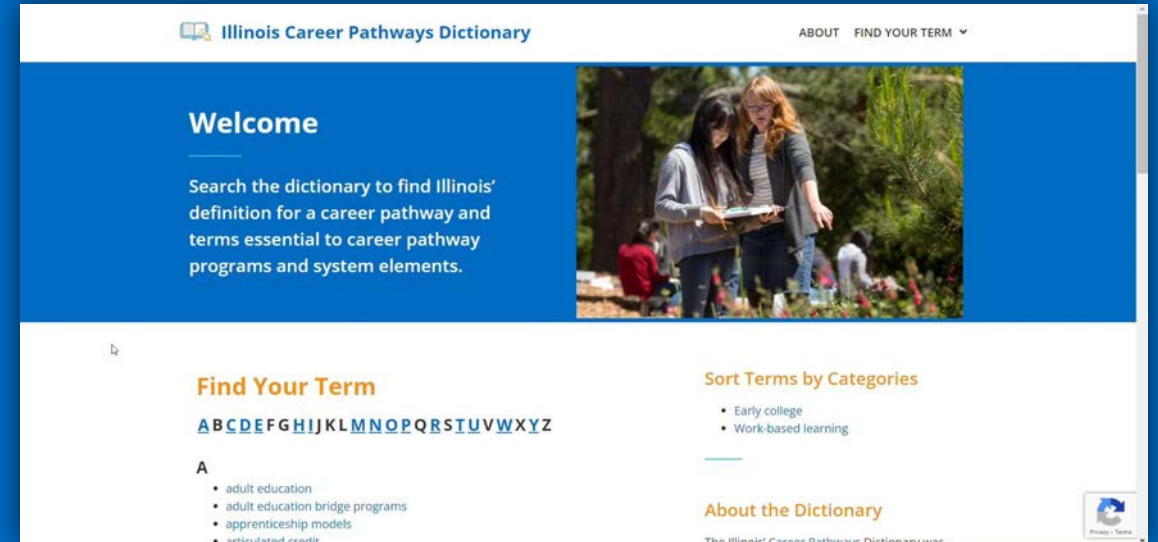


Website Demo

Illinois Career Pathways Dictionary Relaunch

A first-of-its-kind resource for policymakers and practitioners, providing Illinois' definition for a career pathway and terms essential to pathway programs and system elements.

- First released in 2018 as a PDF
- Now relaunched as a stand-alone website at pathwaysdictionary.org
 - Includes new and updated definitions
 - Provides implementation guidance and resources

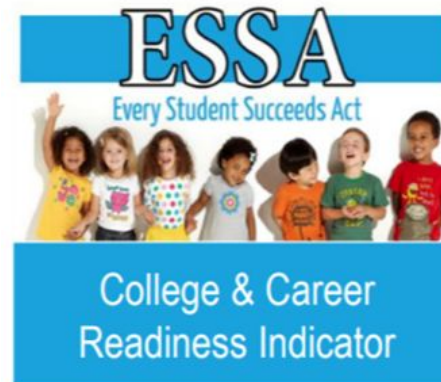
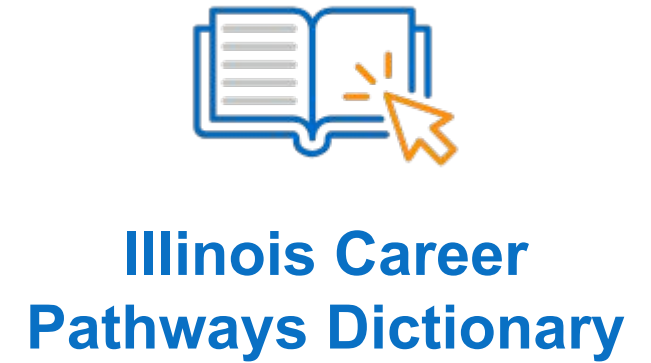
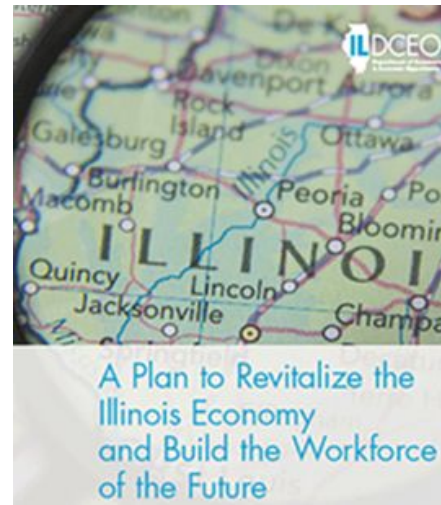




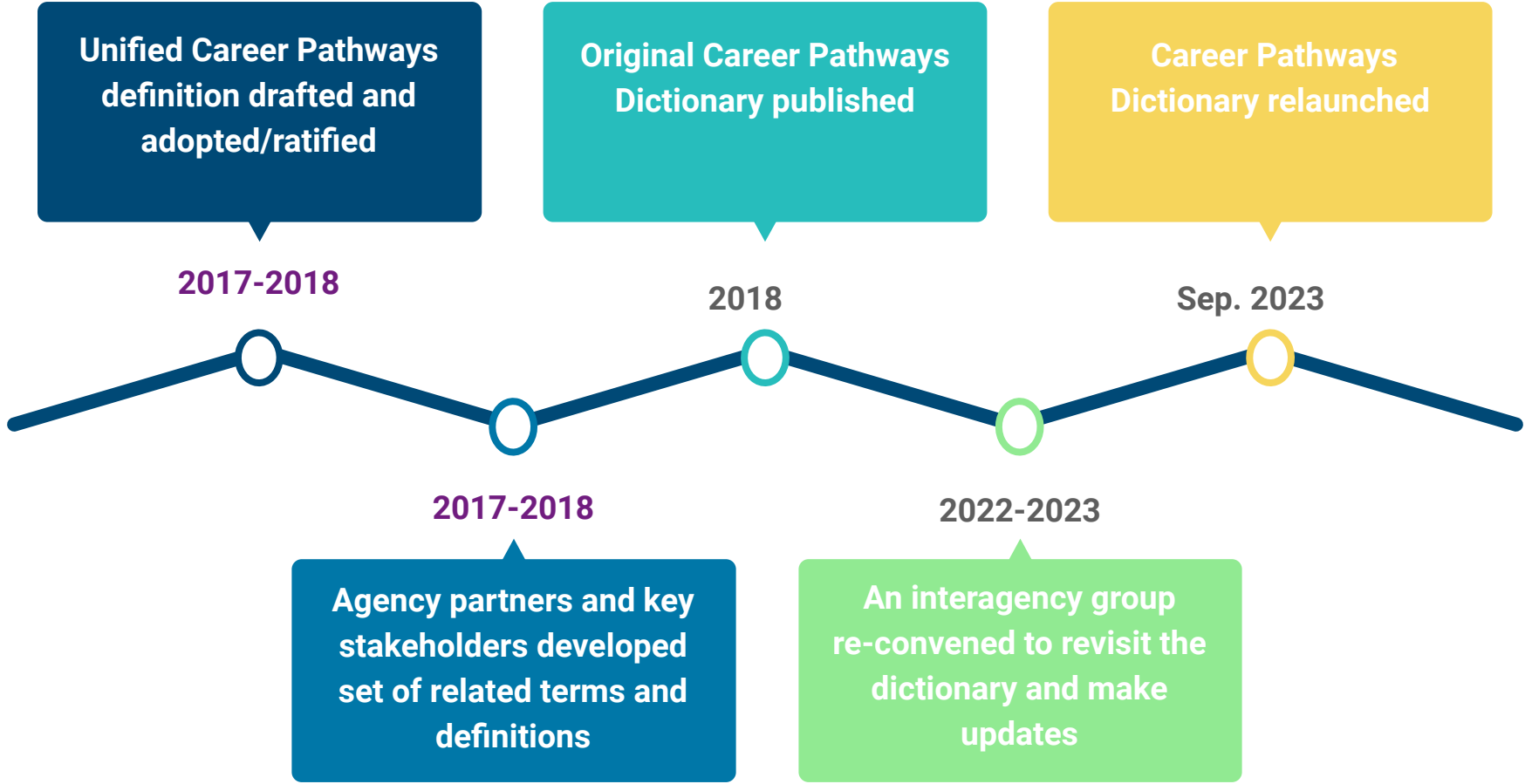
Where did this come from?

Origins of the Career Pathways Dictionary
and why relaunch 2.0

Seeding the Pathways through Policy



How was the Pathways Dictionary developed?





Career Pathway Dictionary 2.0

Process

- Conducted a survey to gain a deeper understanding of the dictionary's relevance and use in the field.
- Convened interagency group (DCEO, IDES, ISAC, ICCB, IBHE, and ISBE) to work through updates and updated design

Updates

- Added new terms
- Updated definitions to reflect current best practices
- Embedded resources throughout
- Included source citation for each definition
- Added category feature
- Added option to sign up to be notified of future updates
- Increased ability to share and edit

Next steps

What we plan to do

- Share extensively throughout Illinois via:
 - agency websites
 - word-of-mouth
 - professional development opportunities and conferences
- Tie to funding (e.g. NOFOs, RFPs, etc.)



Illinois Career
Pathways Dictionary

What you can do

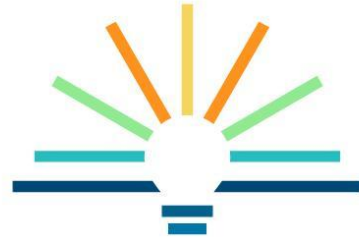
- Share it with others as a helpful resource
- Incorporate it into your work! Examples of how include:
 - Developing local PaCE framework or CCPE implementation
 - PD and training for staff
 - Brainstorming and program design
 - Grant writing

Discussion

How have you
used the
Dictionary?

How do you
see yourself
using this new
version?

What kind of
support might
you want or
need?



EdSystems

EDUCATION SYSTEMS CENTER *at*
NORTHERN ILLINOIS UNIVERSITY

Thank You!

Laura Monteagudo
lmonteagudo@niu.edu